

# DC Disconnects

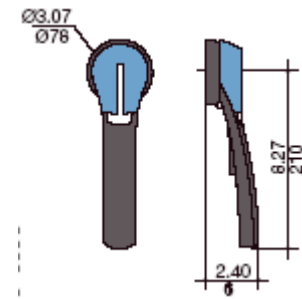
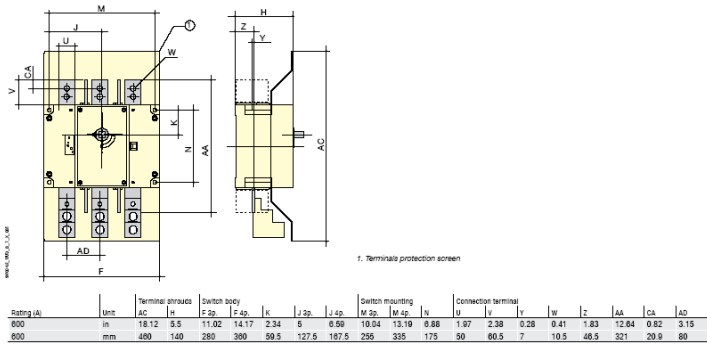
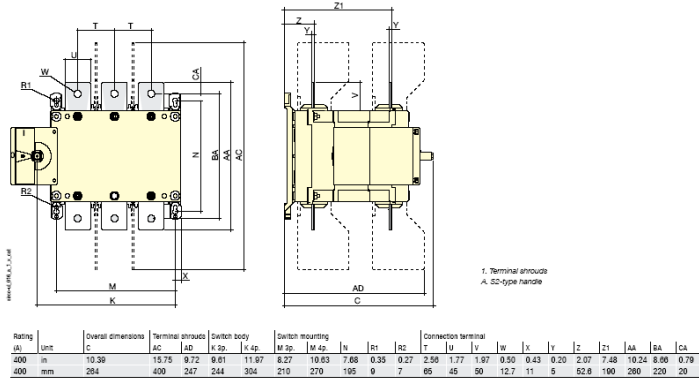
- 400 & 600 AMPS
- 600 VDC
- UL 98 Service Entry
- Double Pole



	Amperage	Voltage	Part Number
	400 AMPS	600 VDC	27DC6041
	600 AMPS	600 VDC	27DC6060

## Dimensions

SIRCO DC 400 A - 6/8 poles



Technical Information		
Description	400A	600A
Min. Wire Size	#2 AWG	2X#2 AWG
Max. Wire Size	600 kcmil	2x 600 kcmil
Mechanical Life	6K	6K
Torque	128 Lbs/in	327 Lbs/in
Short Circuit Current	20 kA	20 kA
Thermal Current	630A	800A

## Accessories

Description	Type	for 400 AMP	for 600 AMP
Handles	NEMA 3R Handle	143D3111	2799 7145
	NEMA 4X Handle	143E3111	2799 7145
	Direct Handle	27995012	4199 7012
Shaft Extension	200mm Shaft	14011520	
	320mm Shaft	14011532	4199 3018
Lugs	2 Piece Set	3954 3040	3954 3060
Jumper	2 Piece Set	2709 2041	2709 2061
Top Shroud	1 Piece	4154 3041	1609 3063
Bottom Shroud	1 Piece	4154 3041	1609 3063